



The IFC Power Women Top 100

The IFC Power Women 100 is an A-Z list of influencers and professionals working around the financial services industry in International Financial Centres. The list has been compiled from a number of sources. Part of the research was generated by the 2013 edition of the Citywealth Leaders List. This was combined with recommendations from

leading figures in the financial services industry to widen the list to include women of influence in the major IFCs. We would like to thank those who contributed to the research.

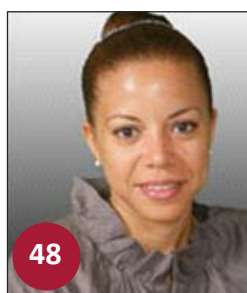
The list focuses on influencers as well as professionals and celebrates powerful women from diverse backgrounds in government, private wealth,

private client advisory and philanthropy across the international financial centres. It recognises women of achievement who are opinion formers, helping to promote business excellence in their home jurisdiction and consolidating the reputations of the financial services industry globally

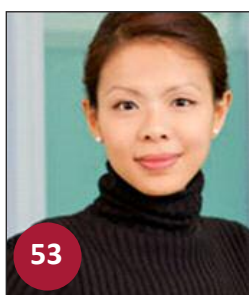
| NAME | ORGANISATION | IFC |
|--|------------------------------------|----------------|
| 1 Monique Adams <i>Head of Private Client</i> | Harneys | BVI |
| 2 Aliya Allen <i>CEO</i> | Bahamas Financial Services Board | Bahamas |
| 3 Gillian Arthur <i>Director, Philanthropy</i> | The Sanne Philanthropic Foundation | Jersey |
| 4 Farrah Ballands <i>Group Head Fiduciary & Administration Services. "High degree of professionalism, insight and leadership skills."</i> | Appleby Trust (Jersey) Limited | Jersey |
| 5 Kecia Barkawi <i>Managing Partner</i> | ValueWORKS AG | Switzerland |
| 6 Grace Barki <i>Managing Director and Head of South East Asia</i> | RBC Wealth Management | Singapore |
| 7 Fiona Barrie <i>Director, Head of Private Wealth, Cayman Islands</i> | Ogier | Cayman Islands |



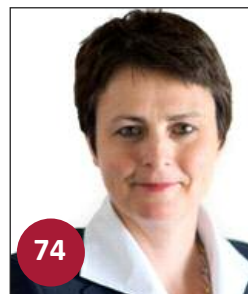
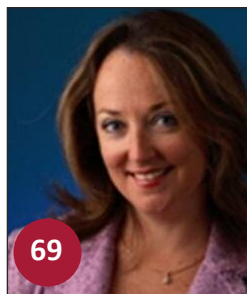
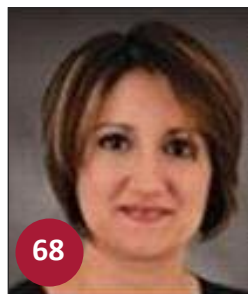
| | NAME | ORGANISATION | IFC |
|----|--|-----------------------------------|----------------|
| 8 | Heather Bestwick <i>Deputy CEO</i> | Jersey Finance | Jersey |
| 9 | Monique Bhullar <i>Senior Counsel, Global Trusts Group</i> | Walkers Global | Cayman Islands |
| 10 | Deanna Bidwell <i>Head of Wealth, Caribbean</i> | RBC Wealth Management | Cayman Islands |
| 11 | Cora Binchey <i>Head of Fiduciary</i> | Stonehage Trust Holdings | Jersey |
| 12 | Olga Boltenko <i>Partner. "The personification of professionalism."</i> | Withers | Switzerland |
| 13 | Louise Bracken Smith <i>Director</i> | Fairway Trust | Jersey |
| 14 | Carola Breusch <i>Director</i> | Vistra | Jersey |
| 15 | Angela Burchall <i>Senior Trust Officer</i> | HSBC | Bermuda |
| 16 | Maria-Carmen Butler <i>Managing Director</i> | JP Morgan Trust Company (Bahamas) | Bahamas |
| 17 | Micheline Calmy Rey <i>Former President of the Switzerland Confederation and member of the Council of Women World Leaders</i> | Swiss Government | Switzerland |
| 18 | Maria Canals de Cediel <i>Head Wealth Advisory, Managing Director, Switzerland</i> | Quilvest | Switzerland |
| 19 | Prudence Charles-Phillip <i>Director, Trust & Corporate Services</i> | AMS | BVI |
| 20 | Stacy Choong <i>Executive Director. "High flyer and technical genius."</i> | JP Morgan | Singapore |
| 21 | Shauna Clapham <i>Director</i> | Swoffers | Guernsey |
| 22 | Tamara Corbin <i>Partner, Charities, Trusts, Foundations</i> | Rawlinson & Hunter | Cayman Islands |
| 23 | Ann Daverino <i>Executive Director</i> | Banque Heritage | Switzerland |
| 24 | Emma Dantec <i>Managing Director</i> | Saffery Champness (Suisse) | Switzerland |
| 25 | Zoe Day <i>Director</i> | Citco Trustees | Cayman Islands |



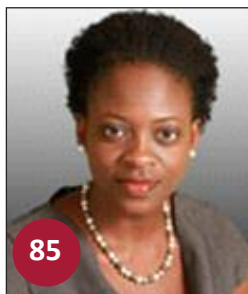
| NAME | ORGANISATION | IFC |
|---|-------------------------------------|----------------|
| 26 Sheila Dean <i>Managing Director. "...hands on and innovative."</i> | Equiom Trust | Isle of Man |
| 27 Diane de Galard <i>Director</i> | Saga Investments | Switzerland |
| 28 Caroline Deletra <i>Counsel</i> | Lenz & Staehelin | Switzerland |
| 29 Elise Donovan <i>Executive Director. "Boldly defended the reputation of the BVI."</i> | BVI International Finance Centre | BVI |
| 30 Elizabeth Dulake <i>Director, Group Head of Client Services</i> | Minerva Trust | Jersey |
| 31 Andrea Dunsby <i>Partner</i> | Turner & Roulstone | Cayman Islands |
| 32 Lee Mc George Durrell Ph D <i>Honorary Director</i> | Durrell Wildlife Conservation Trust | Jersey |
| 33 Sally Edwards <i>Partner</i> | Ogier | Jersey |
| 34 Sue Elliott MVO, MBE <i>EU Political/Economic Affairs</i> | British High Commission Malta | Malta |
| 35 Amalia Erotokritos <i>Partner. "Cannot recommend highly enough."</i> | TP Law | Cyprus |
| 36 Lana Farrington <i>Director</i> | Barclays Private Bank & Trust | Cayman Islands |
| 37 Belinda Ferré <i>Executive Director, External Trusts & Service Providers Team</i> | Bank Sarasin & Co Ltd | Switzerland |
| 38 Leticia Frederick <i>Deputy Head Fiduciary Services</i> | Cayman Islands Monetary Authority | Cayman Islands |
| 39 Helen Green <i>Director</i> | Saffery Champness | Guernsey |
| 40 Sarah Hanna <i>Executive Trust Director</i> | Kleinwort Benson | Jersey |
| 41 Saffron Harrop <i>Managing Director</i> | JTC Group | Jersey |
| 42 Lesley Hodgson <i>Managing Director, Global Family & Private Investment Offices, Guernsey</i> | Northern Trust | Guernsey |



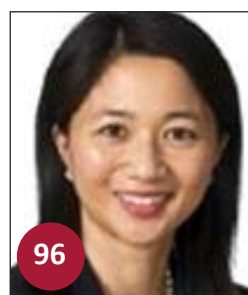
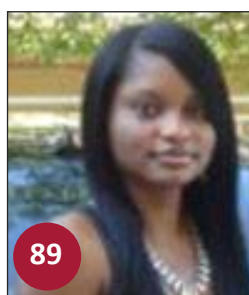
| NAME | ORGANISATION | IFC |
|---|--|----------------|
| 43 Zillah Howard <i>Partner</i> | Bedell Cristin | Jersey |
| 44 Debra C Humphreys <i>Risk & Compliance</i> | Cayman Islands National Corporation | Cayman Islands |
| 45 Stephanie Jarrett <i>Partner, Head of Wealth Management Group</i> | Baker & McKenzie | Switzerland |
| 46 Wong Kai Yun <i>Co-Managing Partner</i> | Chia Wong LLP | Singapore |
| 47 Sarajane Kempster <i>Private Client Director</i> | RBC Wealth Management | Jersey |
| 48 Vanessa King <i>Partner</i> | O'Neal Webster | BVI |
| 49 Thelma Kwan <i>Head of Wealth Advisory, Asia Pacific</i> | Barclays | Hong Kong |
| 50 Pamela Klonaris <i>Partner</i> | Klonaris and Co | Bahamas |
| 51 Karen Le Cras <i>Partner. "Great ambassador for the jurisdiction and extremely competent trusts lawyer."</i> | Carey Olsen | Guernsey |
| 52 Michelle Le Herissier <i>Director, Head of Barclays Wealth Trustees (Singapore). "Precise and accurate.. always well informed..."</i> | Barclays Wealth Trustees (Singapore) Ltd | Singapore |
| 53 Lee Syin Long <i>Head of Trusts, Asia. "Very bright. Definitely a thinker."</i> | Walkers Global | Singapore |
| 54 Linda Longworth <i>Managing Director</i> | Hamilton Trust Company | Bermuda |
| 55 Fiona Le Poidevin <i>CEO</i> | Guernsey Finance | Guernsey |
| 56 Liz Le Poidevin <i>Private Client Director</i> | RBC Wealth Management | Jersey |
| 57 Liza Loucaides-Theofanous <i>Advocate</i> | L Loucaides-Theofanous | Cyprus |
| 58 Justine Markovitz <i>Managing Director, Geneva</i> | Withers | Switzerland |
| 59 Rosemary Marr <i>Director, Head of Trusts</i> | Nedgroup Trust | Jersey |



| NAME | ORGANISATION | IFC |
|---|----------------------------|----------------|
| 60 Glenys Hanna Martin <i>Minister of Transport</i> | Government of the Bahamas | Bahamas |
| 61 The Hon Allyson Maynard Gibson <i>Attorney General, Minister Legal Affairs</i> | Government of the Bahamas | Bahamas |
| 62 Alicia McGinney <i>Head of Private Family Office</i> | MP Family Office | Jersey |
| 63 Pearline McIntosh <i>VP, Deputy MD Trust Services</i> | Butterfield Trust Bermuda | Bermuda |
| 64 Morven McMillan <i>Partner</i> | Mourant Ozannes | Cayman Islands |
| 65 Claude Medernach <i>Counsel</i> | Arendt & Medernach | Luxembourg |
| 66 Dr Annalise Micallef <i>Partner</i> | Micallef Notaries | Malta |
| 67 Natasha Michaelides <i>Owner Manager</i> | Thanos Hotels | Cyprus |
| 68 Priscilla Mifsud-Parker <i>Partner</i> | Chetcuti Cauchi Advocates | Malta |
| 69 Stella Mitchell Voisin <i>Managing Director</i> | Summit Trust International | Switzerland |
| 70 Helen Munns <i>Managing Director</i> | STM Fiduciare | Jersey |
| 71 Geraldine Noel <i>Managing Partner</i> | Acumum Legal Group | Malta |
| 72 Alison Parry <i>Managing Director. "Energetic and motivational manager with true passion about her work."</i> | Legis Group Ltd | Guernsey |
| 73 Brita Pfister <i>Head of Wealth Planning Asia</i> | Rothschild Trust | Singapore |
| 74 Kathryn Purkis <i>Partner, Head of Fiduciary</i> | Collas Crill | Jersey |
| 75 Simone Retter <i>Managing Partner</i> | Retter Attorneys | Luxembourg |
| 76 Naomi Rive <i>Partner, Practice Group Head</i> | Appleby | Jersey |



| NAME | ORGANISATION | IFC |
|--|--|----------------|
| 77 Emma Roberts <i>Managing Director. "Dynamic woman."</i> | Rothschild Trust | Guernsey |
| 78 Emma Santiago <i>Senior Manager</i> | Rawlinson & Hunter | Cayman Islands |
| 79 Vanessa Schrum <i>Head Private Client & Trusts</i> | Appleby | Bermuda |
| 80 Haidée Stephens <i>Managing Director</i> | Louvre Fiduciary Group Limited | Guernsey |
| 81 Diane Stirling <i>Senior Trust Officer</i> | HSBC Private Bank | Bermuda |
| 82 Jackie E Stirling <i>Senior Resident Officer</i> | Bessemer Trust Co Cayman Islands | Cayman Islands |
| 83 Ban Su Mei <i>Partner. "...a very understated but highly professional approach. Extremely reliable."</i> | Khattar Wong & Partners | Singapore |
| 84 Catriona Syed <i>Partner. 'A very understated but highly professional approach.'</i> | Charles Russell | Geneva/London |
| 85 Willa Tavernier <i>Partner</i> | O'Neal Webster | BVI |
| 86 Liz Taylor <i>Private Client Director</i> | RBC Wealth Management | Jersey |
| 87 Tracy Tepper <i>CEO & President</i> | Lombard Odier Darier Hentsch Trust (Bermuda) Limited | Bermuda |
| 88 Heather Thompson <i>Partner</i> | Higgs & Johnson | Bahamas |
| 89 Sanchia Thompson <i>Asst Managing Director</i> | ATU General Trust BVI Ltd | BVI |
| 90 Sheena Thompson <i>Regional Head of Operations</i> | RBC Wealth Management | Cayman Islands |
| 91 Heather Tibbo <i>Director</i> | Crestbridge | Jersey |
| 92 Lisa Vizia <i>Director. "...professional, unflappable."</i> | Saffery Champness | Guernsey |
| 93 Sanna-Liisa Valtanen <i>Director, Head of Investment Consulting. "One of the foremost women in the financial playing field."</i> | Asset Risk Consulting | Guernsey |



| NAME | ORGANISATION | IFC |
|---|-----------------------------------|----------------|
| 94 Julia Warrander <i>Director. "Her knowledge of the bond markets is extraordinary."</i> | Affinity Private Wealth | Jersey |
| 95 Eveline Widmer-Schlumpf <i>Lawyer, Politician</i> | Swiss Federal Council | Switzerland |
| 96 Frances Woo <i>Group Chairman, Managing Partner, Hong Kong: Comment "Has established a strong reputation through her long-standing presence in the market."</i> | Appleby | Hong Kong |
| 97 Michelle Wolfe <i>Managing Director. "Excellent with clients."</i> | Meritus | Bermuda |
| 98 Tina Wüstemann <i>Partner</i> | Bär & Karrer | Switzerland |
| 99 Ruth Yates <i>Senior Analyst</i> | Cayman Islands Monetary Authority | Cayman Islands |
| 100 Emily Yiolitis <i>Managing Partner</i> | Harneys | Cyprus |

Citywealth supports women in private wealth and private client advisory through its Citywealth Women in Wealth group which meets once a quarter in London to discuss business and management issues.

The third Citywealth International Financial Centre Awards will be held in London on 23rd January 2014 to recognise the leading organisations across the international financial centres. Online voting for the 2013/14 shortlist is open. Visit:

<http://www.citywealthmag.com/international-financial-centre-awards>

Citywealth is holding its inaugural lunch for power women in private wealth and private client on 23 January 2013 at The Grange, St Pauls Hotel. The lunch will be an opportunity for senior women to network and to hear key speakers on women and business issues. There will also be three awards to recognise outstanding individuals. Tickets £195 + vat. Early bird discount of 10% for bookings received by September 2013. The Grange, St Pauls Hotel has a negotiated room rate available for Citywealth clients.

For any information on Citywealth, contact

Joe Bell, Managing Director, Citywealth (Jones Publishing Ltd) jbelle@j-p-c.tv

Tel: +44 (0) 1483 526445