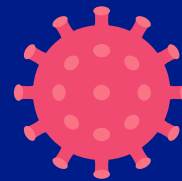


COVID-19 (Coronavirus)



Social Distancing and Closures Schedule

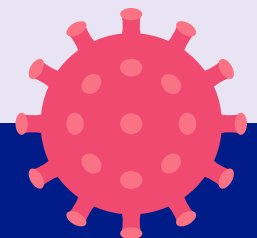
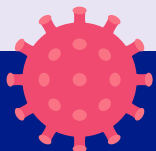
Ministry of Health & National Security Version 2 – 20th March 2020

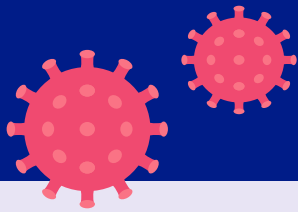
To be effective 21st March to 6th April 2020

Review 3rd April 2020 for 6th April guidance

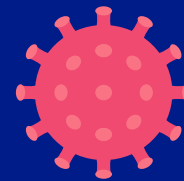
No.	Service	Component	Guidance
1	Banks, Financial Institutions, Corporate Businesses, Government Offices	ATM Service	Operational
		Online Services	Operational
		ATM / Cash Deposits	Operational
		General Administration	Minimum operations / Work from Home
		Counter Services	Minimum operations with social distancing
2	Schools		Closed Temporarily until 6 th April. Reconsider & decide by 31 st March.
3	Uniformed Services <ul style="list-style-type: none"> • Bermuda Police Service • Royal Bermuda Regiment • BFRS • Customs • Immigration 	Enforcement / Fire Fighting / Medical	Operational
		General Administration / Support Services	Minimum operations/ Work from home
4	Legal Affairs <ul style="list-style-type: none"> • Judiciary (Courts) • AG Chambers • DPP • HMC • Court Services • Child Family Services 	Court Appearances	Plea Court – for serious matters only. DPP / CJ to be consulted.
		Trials	Open with social distancing. Limit to max 15 essential persons. No observers.
		General Administration	Open skeleton operation with social distancing. Close to the public.
5	Prisons	Operational	Operational
		Visits	Not allowed
		General Administration	Open skeleton operation with social distancing. Close to the public.

Stay informed on the latest developments about COVID-19 by visiting the Government of Bermuda's website <https://www.gov.bm/coronavirus>

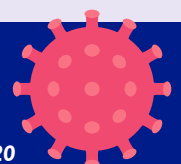
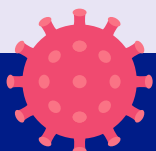


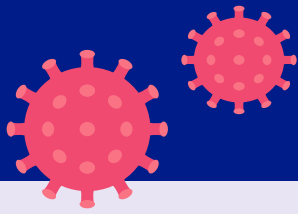


COVID-19 (Coronavirus)

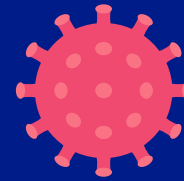


6	Healthcare services, Clinics, Pharmacies, Veterinary	Hospital and UCC	Operational for essential care with social distancing
		Healthcare services, Clinics, Pharmacies, Veterinary	Operational for essential care with social distancing
		Home Care	Operational. Standard precautions. Droplet precautions with symptomatic persons.
		General Administration	Open skeleton operation with social distancing.
		Visits	Not allowed except for critical cases and direction from Ministry of Health
7	Waste Management (Govt) <ul style="list-style-type: none"> • Trash Collection • Water Service • Sewage Service • Emergency call out 	Operational / Maintenance	Operational
		General Administration	Minimum operations / Work from home
8	Electricity Supply <ul style="list-style-type: none"> • Emergency Call out 	Operational / Maintenance	Operational
		General Administration	Minimum operations / Work from home
9	Broadcasting and TV (includes radio stations)	Operations and Information dissemination	Operational
		General Administration	Minimum Operations / work from home
10	Telecommunication Services	Operations / Maintenance	Operational
		General Administration	Open skeleton operation with social distancing.
		Counter services	Open skeleton operation with social distancing.
		Data Centre	Operational
		Call Centre	Operational
11	Public Transportation <ul style="list-style-type: none"> • Buses • Ferries 	Operations / Maintenance	Closed
		General Administration	Minimum Operations / work from home
12	Food Suppliers <ul style="list-style-type: none"> • Restaurants • Small Businesses/ Food Trucks 	Supply raw food	Allowed
		Take away	Allowed
		Delivery	Allowed
		Dine in	Open with social distancing. Keep tables 1 meter away with a max 50 people
13	Groceries / discount warehouses / wholesalers	Operations	Open with social distancing
		Buying necessities	Family Limits
		Deliveries	Open with social distancing





COVID-19 (Coronavirus)



14	Hotels / Airbnb / Guest Houses	Accommodations operations	Open with social distancing. Quarantined guests confined to room. Non-quarantined guests may use as normal with social distancing.
		Pool	Close
		Gym	Close
		Bars (indoors and outdoors)	Open with social distancing. Keep tables 1 meter away with a max 15 people
		Restaurants	Open with social distancing. Keep tables 1 meter away with a max 50 people
		Kitchen	Open with social distancing
15	Gym		Close
16	Beauty salons /spas / barbers		Close
17	Religion	Church Services / Weddings	Close
		Funeral Services	Allowed with social distancing. Max 10 people indoors. Graveside social distancing
18	Sports / Concerts / Leisure outings	Gatherings /Concerts/Clubs/ Cinemas/	Close
19	Cinemas		Open with social distancing. One person in every other seat- staggered seating
20	Bars and clubs	Social clubs/Bars/Night Clubs	Open with social distancing. Keep tables 1 meter away with a max 15 people
21	Retail Businesses		Open with social distancing. Keep 1 meter apart
22	Movement within country		Allowed with social distancing. Keep 1 meter apart. Individual exercise outdoors allowed. Group exercise allowed where social distancing can be maintained.
23	Travel restrictions for residents	Citizens leaving	Discouraged unless for emergency purposes
		Health personnel travel	Consider disallowing. Would require Governor order
		Returning citizen, residents and dependent of residents	Allowed but must self-quarantine for 14 days and be subject to public health monitoring
		Non-citizen leaving	Allowed
24	Foreign Visitor Entry	Visitors	Not allowed except for those with diplomatic status, involved in providing essential services. Must self-quarantine for 14 days and be subject to public health monitoring.
		Health personnel	Allow but must self-quarantine for 14 days and be subject to public health monitoring.

